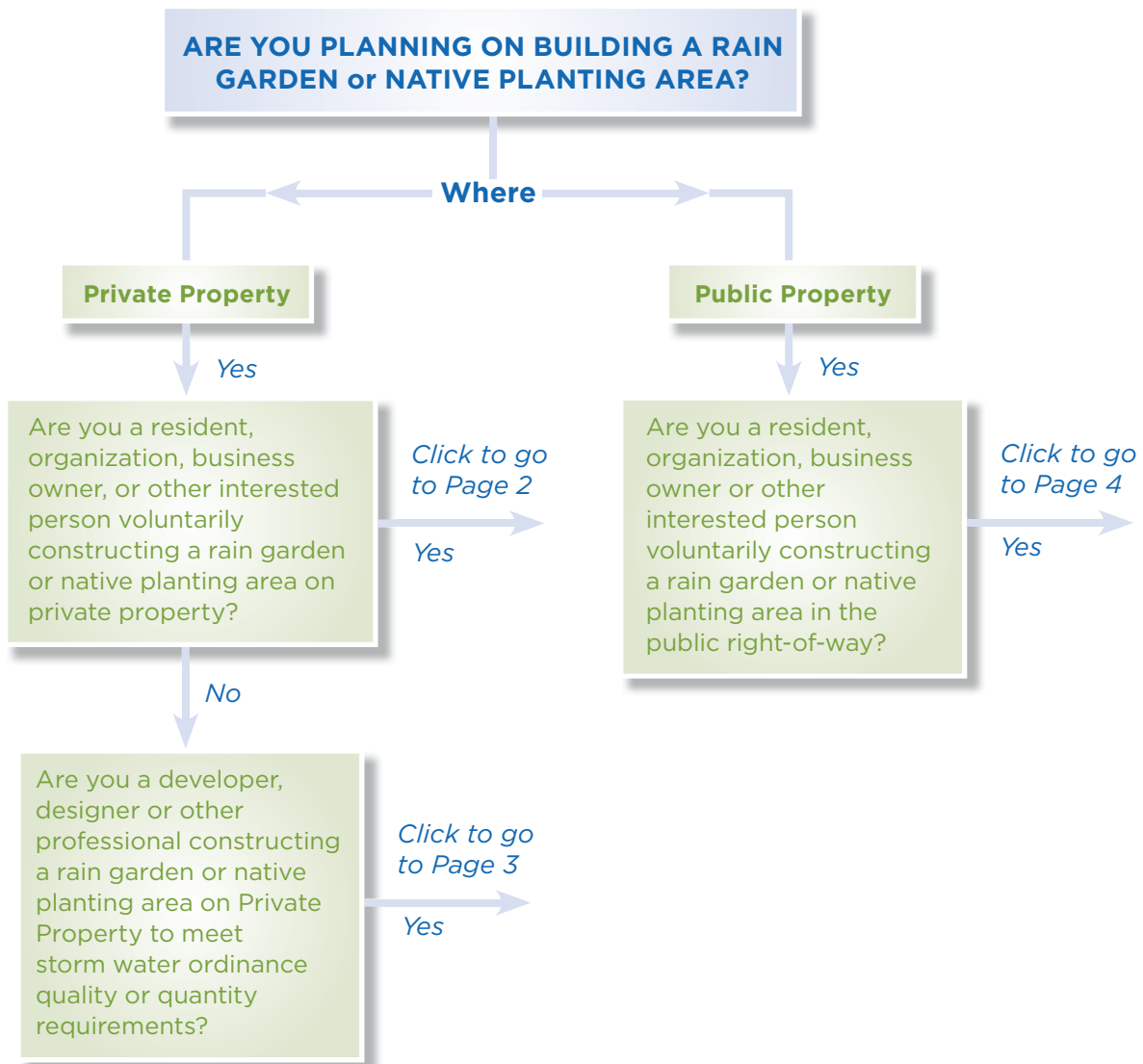
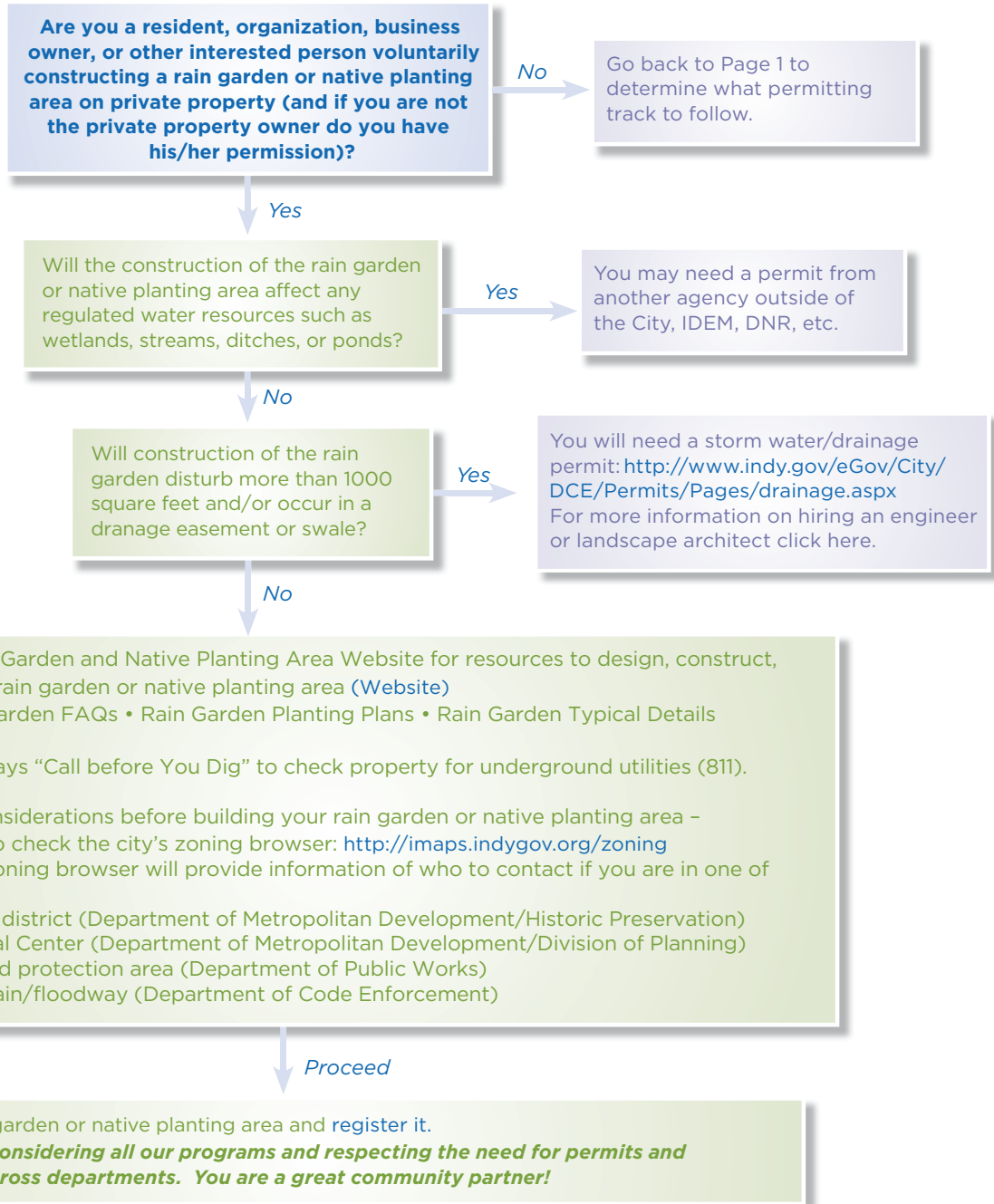




## WHAT TYPES OF PERMITS DO I NEED TO CONSIDER WHEN BUILDING A RAIN GARDEN OR NATIVE PLANTING AREA?



Mayor Ballard launched SustainIndy and created the Office of Sustainability in October 2008. SustainIndy is a bold and innovative enterprise aimed at delivering long-term cost savings to the City, building the local economy, improving our quality of life and enhancing our environmental and public health. Its efforts are designed to aggressively move Indianapolis forward in making it one of the most sustainable cities in the Midwest.



Mayor Ballard launched SustainIndy and created the Office of Sustainability in October 2008. SustainIndy is a bold and innovative enterprise aimed at delivering long-term cost savings to the City, building the local economy, improving our quality of life and enhancing our environmental and public health. Its efforts are designed to aggressively move Indianapolis forward in making it one of the most sustainable cities in the Midwest.



Are you a developer, designer, or other professional constructing a rain garden or native planting area on private property to meet storm water ordinance quality or quantity requirements?

No

Go back to Page 1 to determine what permitting track to follow.

Yes

You will need a storm water/drainage permit:  
<http://www.indy.gov/eGov/City/DCE/Permits/Pages/drainage.aspx>

Check the Rain Garden and Native Planting Area Website for resources to design, construct, and build your rain garden or native planting area ([Website](#))

[Rain Garden FAQs](#) • [Rain Garden Planting Plans](#) • [Rain Garden Typical Details](#)

Remember always "Call before You Dig" to check property for underground utilities (811).

A few more considerations before building your rain garden or native planting area -

You will need to check the city's zoning browser: <http://imaps.indygov.org/zoning>

- The city's zoning browser will provide information of who to contact if you are in one of these areas.
- In a historic district (Department of Metropolitan Development/Historic Preservation)
- In a Regional Center (Department of Metropolitan Development/Division of Planning)
- In a wellhead protection area (Department of Public Works)
- In a floodplain/floodway (Department of Code Enforcement)

Proceed

Build your rain garden or native planting area and [register it](#).

***Thank you for considering all our programs and respecting the need for permits and coordination across departments. You are a great community partner!***



Are you a resident, organization, business owner, or other interested person voluntarily constructing a rain garden or native planting area in the public right-of-way?

No

Go back to Page 1 to determine what permitting track to follow.

Yes

You will need a right-of-way encroachment license (Department of Code Enforcement)  
<http://www.indy.gov/eGov/City/DCE/Permits/Pages/forms.aspx>

This license will also require a flora permit. (Department of Code Enforcement)  
<http://www.indy.gov/eGov/City/DCE/Permits/Pages/forms.aspx>

You will need a right of way use permit. (Department of Department of Metropolitan Development)  
[http://www.indy.gov/eGov/City/DCE/Permits/Right\\_of\\_Way/Pages/home.aspx](http://www.indy.gov/eGov/City/DCE/Permits/Right_of_Way/Pages/home.aspx)

If construction of your project is greater than 1000 square feet and/or impacting or affecting City storm water infrastructure, you will need a storm water/drainage permit, including completion of storm water retrofit forms.  
(Department of Code Enforcement) <http://www.indy.gov/eGov/City/DCE/Permits/Pages/drainage.aspx>

If construction of your project is less than 1000 square feet and not impacting or affecting City storm water infrastructure, you will need to complete the City's storm water retrofit forms ([www.sustainindy.org](http://www.sustainindy.org)).

If construction of your project impact curbs, street widths, or on-street parking, you will need to complete a Driveway Access Street Construction Permit. (Department of Code Enforcement)  
[http://www.indy.gov/eGov/City/DCE/Permits/Driveway\\_Curb/Pages/home.aspx](http://www.indy.gov/eGov/City/DCE/Permits/Driveway_Curb/Pages/home.aspx)

Proceed

Will the construction of the rain garden or native planting area affect any regulated water resources such as wetlands, streams, ditches, or ponds?

Yes

You may need a permit from another agency outside of the City IDEM, DNR, etc.

No

Check the Rain Garden and Native Planting Area Website for resources to design, construct, and build your rain garden or native planting area ([Website](#))  
Rain Garden FAQs • Rain Garden Planting Plans • Rain Garden Typical Details

Remember always "Call before You Dig" to check property for underground utilities (811).

A few more considerations before building your rain garden or native planting area -

You will need to check the city's zoning browser: <http://imaps.indygov.org/zoning>

- The city's zoning browser will provide information of who to contact if you are in one of these areas.
- In a historic district (Department of Metropolitan Development/Historic Preservation)
- In a Regional Center (Department of Metropolitan Development/Division of Planning)
- In a wellhead protection area (Department of Public Works)
- In a floodplain/floodway (Department of Code Enforcement)

Proceed

Build your rain garden or native planting area and register it.

***Thank you for considering all our programs and respecting the need for permits and coordination across departments. You are a great community partner!***

Mayor Ballard launched SustainIndy and created the Office of Sustainability in October 2008. SustainIndy is a bold and innovative enterprise aimed at delivering long-term cost savings to the City, building the local economy, improving our quality of life and enhancing our environmental and public health. Its efforts are designed to aggressively move Indianapolis forward in making it one of the most sustainable cities in the Midwest.